

Key facts to remember

1. The ruins at Pompeii were first discovered late in the 16th century by the architect **Domenico Fontana**
2. Pompeii was destroyed because of the eruption of Mount Vesuvius on **August 24, 79 CE**
3. Traveling toward Pompeii at about 180 miles an hour, the surge scorched everything in its path.
4. Scientists say Mount Vesuvius is overdue for another major explosion.
5. Mary Anning was also the first to discover the complete skeleton of a *Plesiosaurus*

Vocabulary

Mary Anning	Mary Anning (1799–1847) was an English fossil collector.
Fossil	Fossils are the remains, or traces, of once-living things preserved as rock
Pompeii	An ancient city in Naples, Italy
Mount Vesuvius	A volcano is Pompeii, Naples
Surge	A searing-hot cloud of ash, rock, and toxic gas from a volcano
Volcanic Eruption	The sudden and violent explosion of lava, gas, ash and rock out of a volcano
Magma	Hot molten rock found in the Earth's mantle

My memory jogger

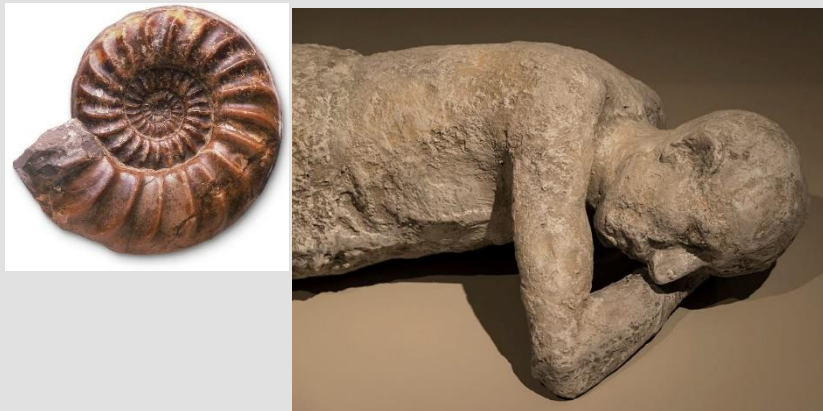
Mary Anning (1799–1847) was an English fossil collector. She lived in Lyme Regis in Dorset, in an area now known as the Jurassic Coast. Mary had little formal education but was taught fossil hunting by her father. She made many important fossil discoveries during her lifetime, including an Ichthyosaur fossil in 1811 and a fossilised Plesiosaur in 1823.



fossilised Plesiosaur skeleton



Diagram of...



This links to...

Geography –
Volcanoes,
Tectonic Plates

Science - Rocks

What's next?